

Nowcasting in Seattle



Clifford Mass and Jeff Baars
Department of Atmospheric Sciences
University of Washington
Seattle, Washington

Can a major city save money and lives using nowcasting?

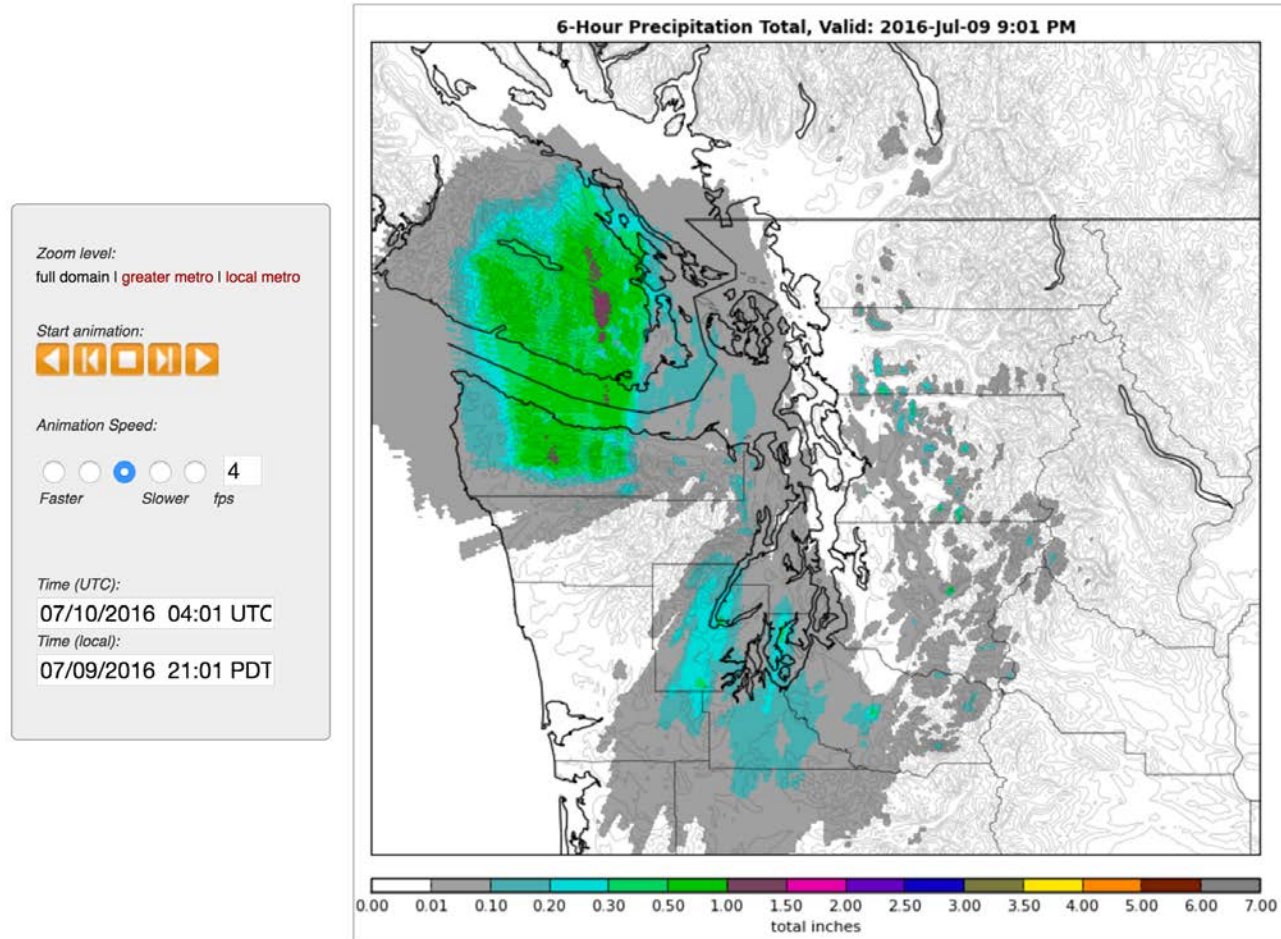
- **Prepare for and respond to windstorms**
- **Prepare for and respond to snow and ice events**
- **Warning and responding to heavy precipitation events**



The City of Seattle Has Invested in Three Nowcasting Applications



RainWatch



Please direct questions and comments to [Jeff Baars](#).

Disclaimer: Certain rainfall data used in analyses on this page have not received final approval and as such are provisional and subject to final revision. The data are released on the condition that neither the University of Washington nor Seattle Public Utilities may be held liable for any damages resulting from their use.



Current Temperatures

Temperature Trends

Estimated Snowfall

Snow Level Estimation

Forecast Temperatures

NWS Forecast Snowfall

UW Forecast Snowfall

NWS Warnings

NWS Zone Forecast



Slow Fast

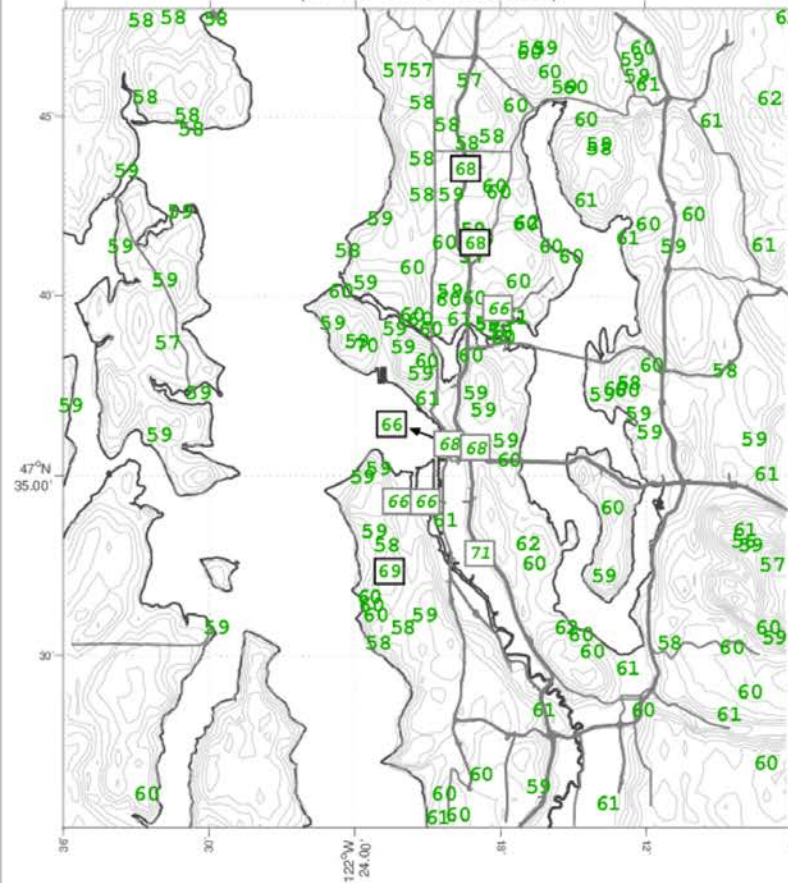
Full Domain

Greater Metro

- >35°F
- 32 - 35
- 29 - 32
- 26 - 29
- 23 - 26
- <23

[About these plots](#)

Monday 11-Jul-2016 10:00 AM
(11-Jul-2016 17:00 GMT)



SnowWatch

UW Forecast

NWS Gridded Forecast

HRRR Forecast

Observations

NWS Warnings

NWS Zone Forecast

NWS Discussion

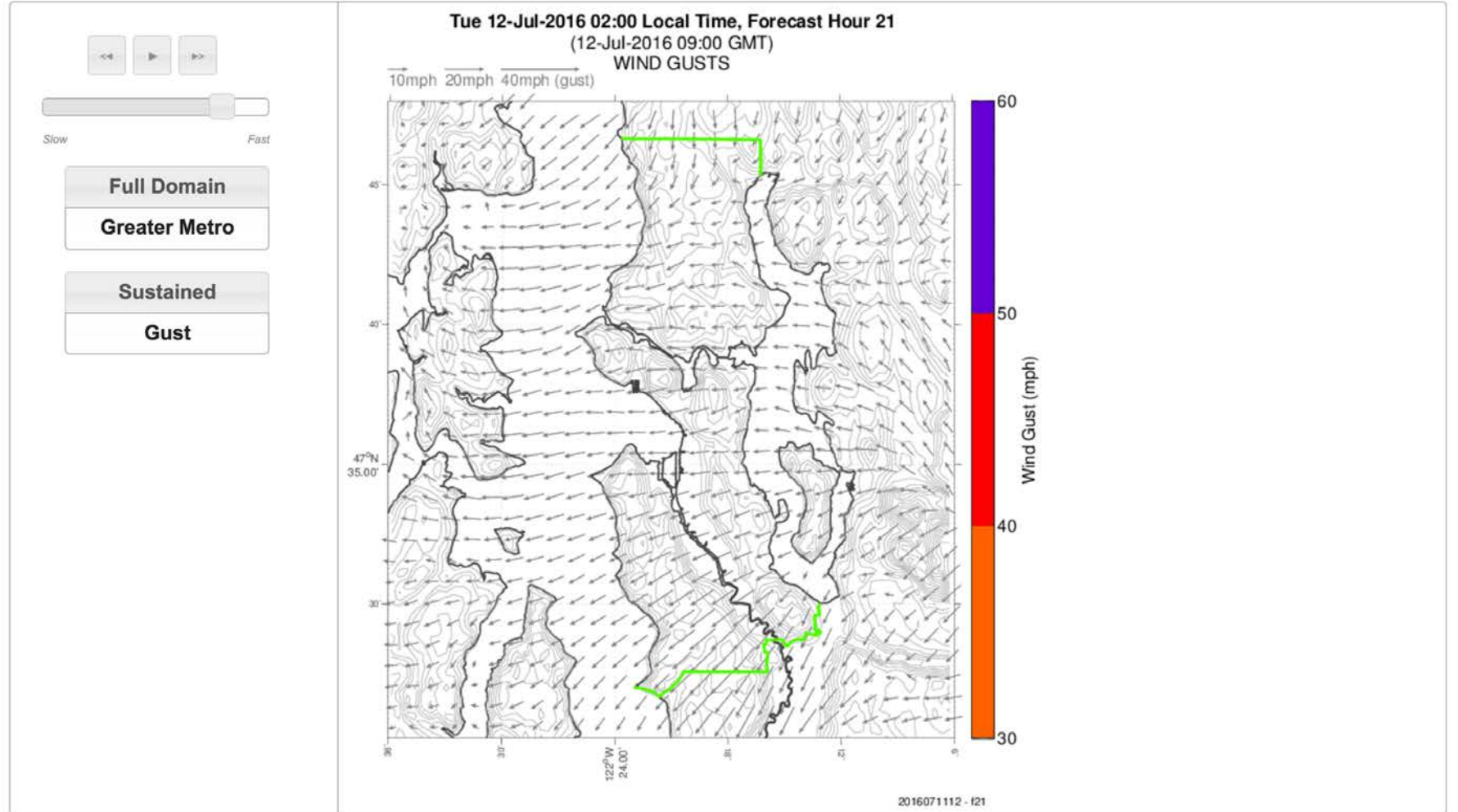
Profiler

Alerts

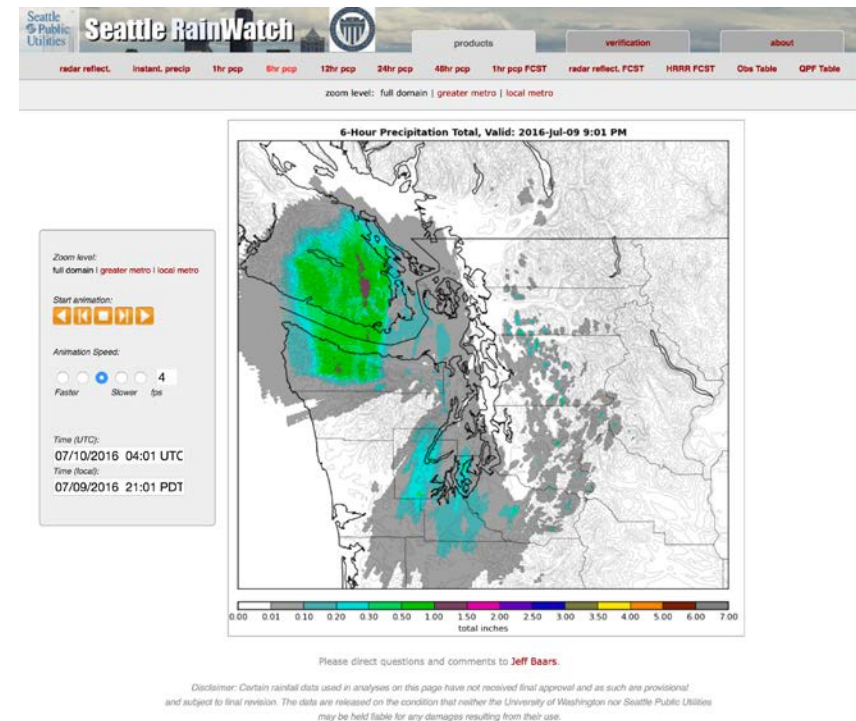
Verification

Rewind

WindWatch



RainWatch was built after heavy rain flooded parts of Seattle and a woman died in her basement

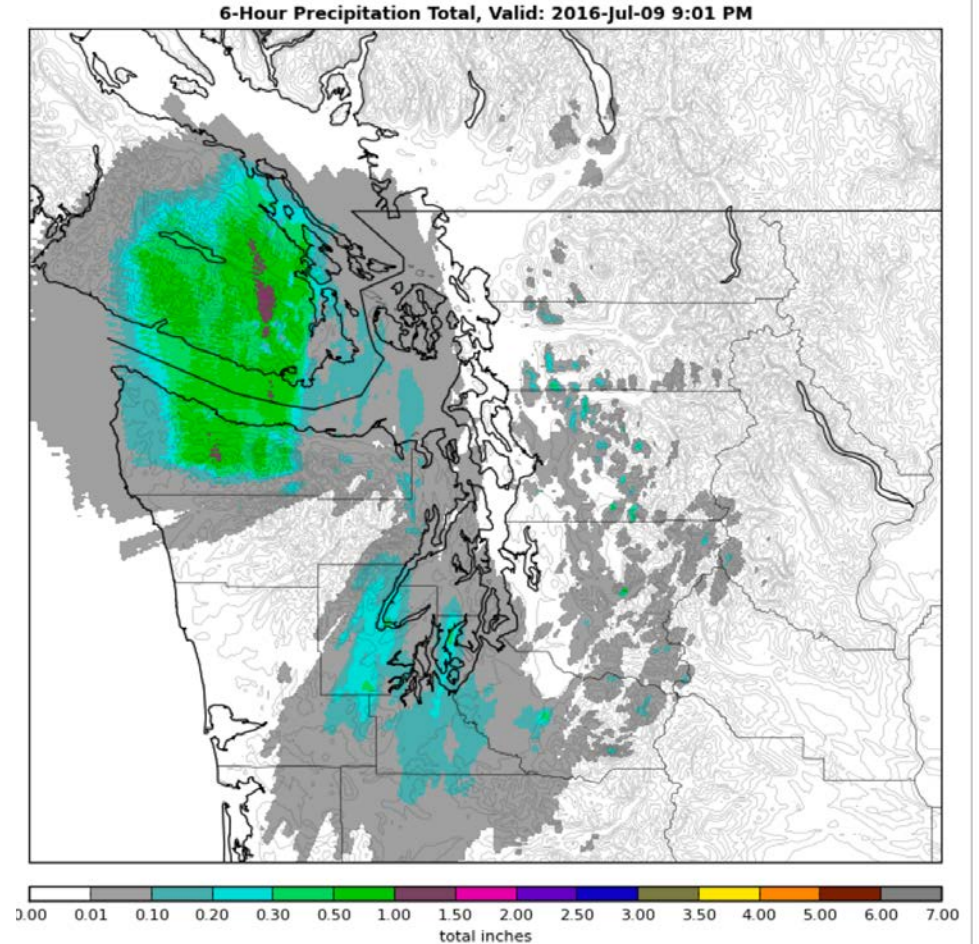


Short-Term Warnings Allow the City To Intervene



RainWatch Capabilities

- Calibrates radar estimates of precipitation using local rain gauges
- Calculates 1-hr, 6-hr, 24-h, and 48-h totals.
- Provides a 1-h precipitation forecast based on radar extrapolation
- Also provides the NOAA HRRR (High Resolution Rapid Refresh Forecast) for the near future.
- Warns Seattle officials when observed or forecast precipitation amounts exceed pre-determined values.
- Available at <http://www.atmos.washington.edu/SPU/>



SnowWatch

Seattle is crippled by even light amounts of snow



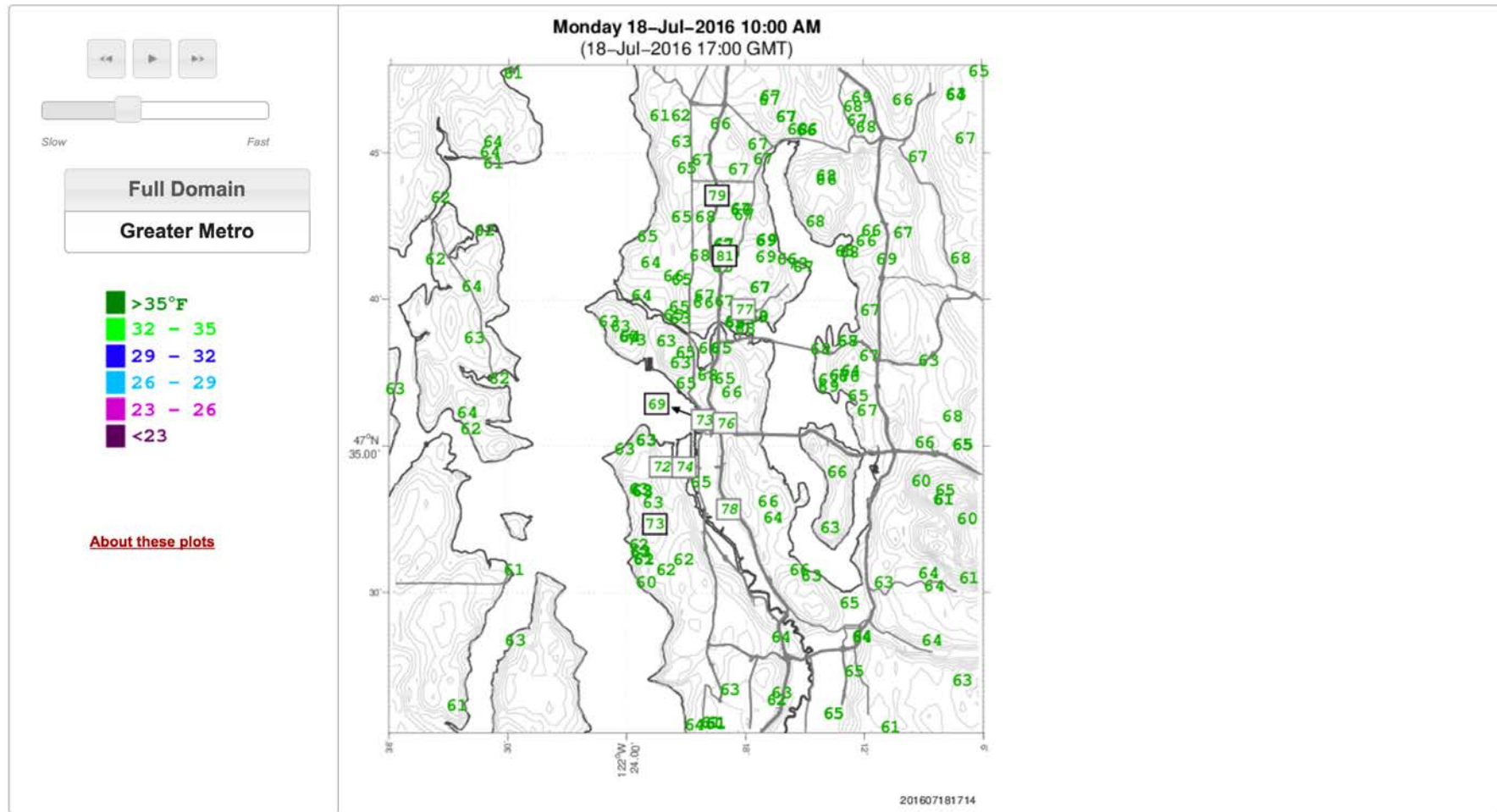
In December of 2008 a series of modest snowstorms brought the city to a standstill for 2 weeks, with costs of hundreds of millions of dollars

**Needed better forecasting/
nowcasting of snow to
prepare and clear
roads**






- Current Temperatures
- Temperature Trends
- Estimated Snowfall
- Snow Level Estimation
- Forecast Temperatures
- NWS Forecast Snowfall
- UW Forecast Snowfall
- NWS Warnings
- NWS Zone Forecast




SnowWatch

- Monitors both high-resolution model forecasts AND the National Weather Service gridded snow forecasts.
- Sends warnings to Seattle Department of Transportation personnel when a snow or ice threat exists, including road surface temps $\leq +34^{\circ}\text{F}$

From Jeff Baars 

Subject Snowwatch Alert! Area road-surface temperature ≤ 34 deg F

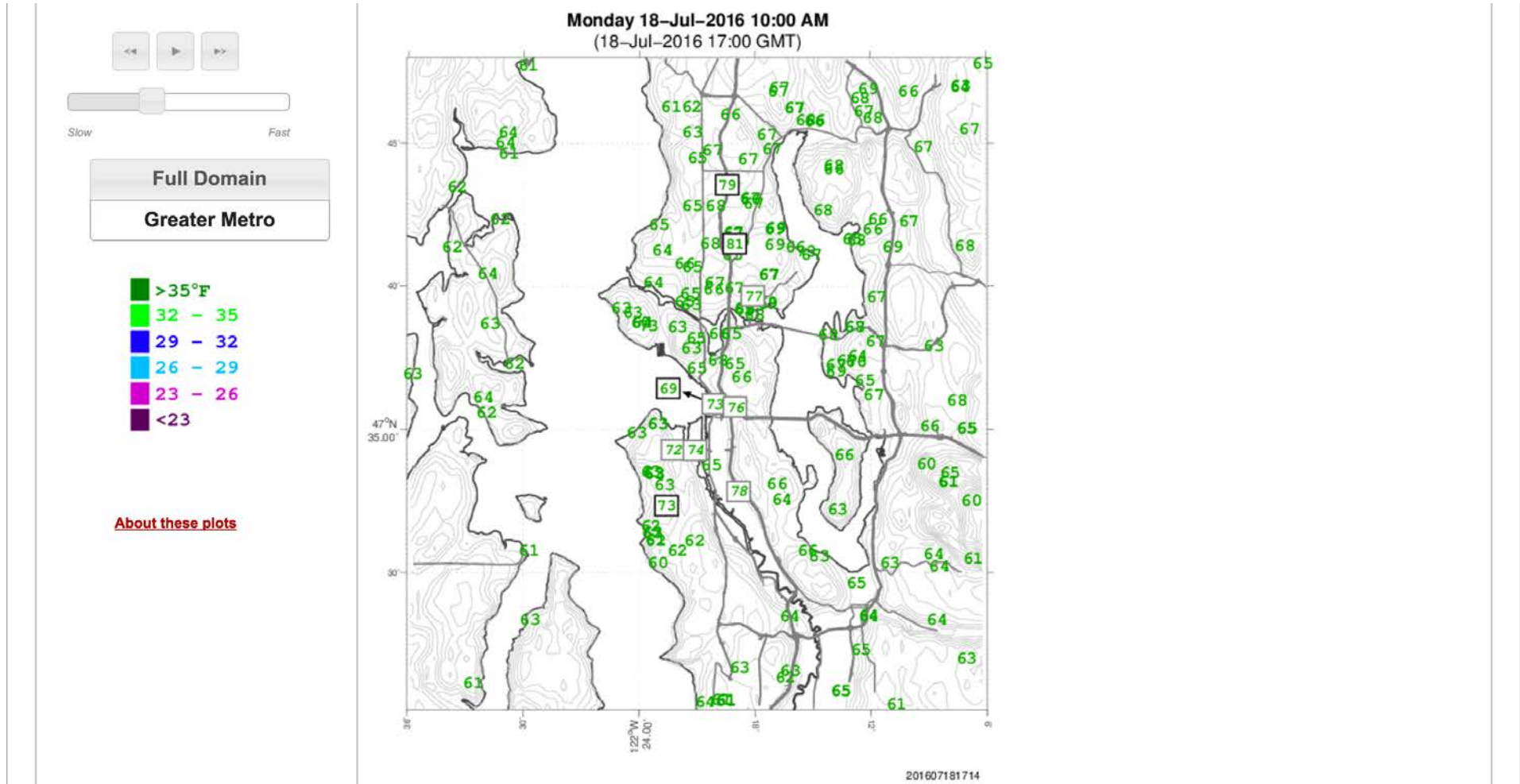
To cliff Mass 

A road-surface temperature ≤ 34 deg F was found within the last 2 hours at the stations listed below. See <http://atmos.washington.e>

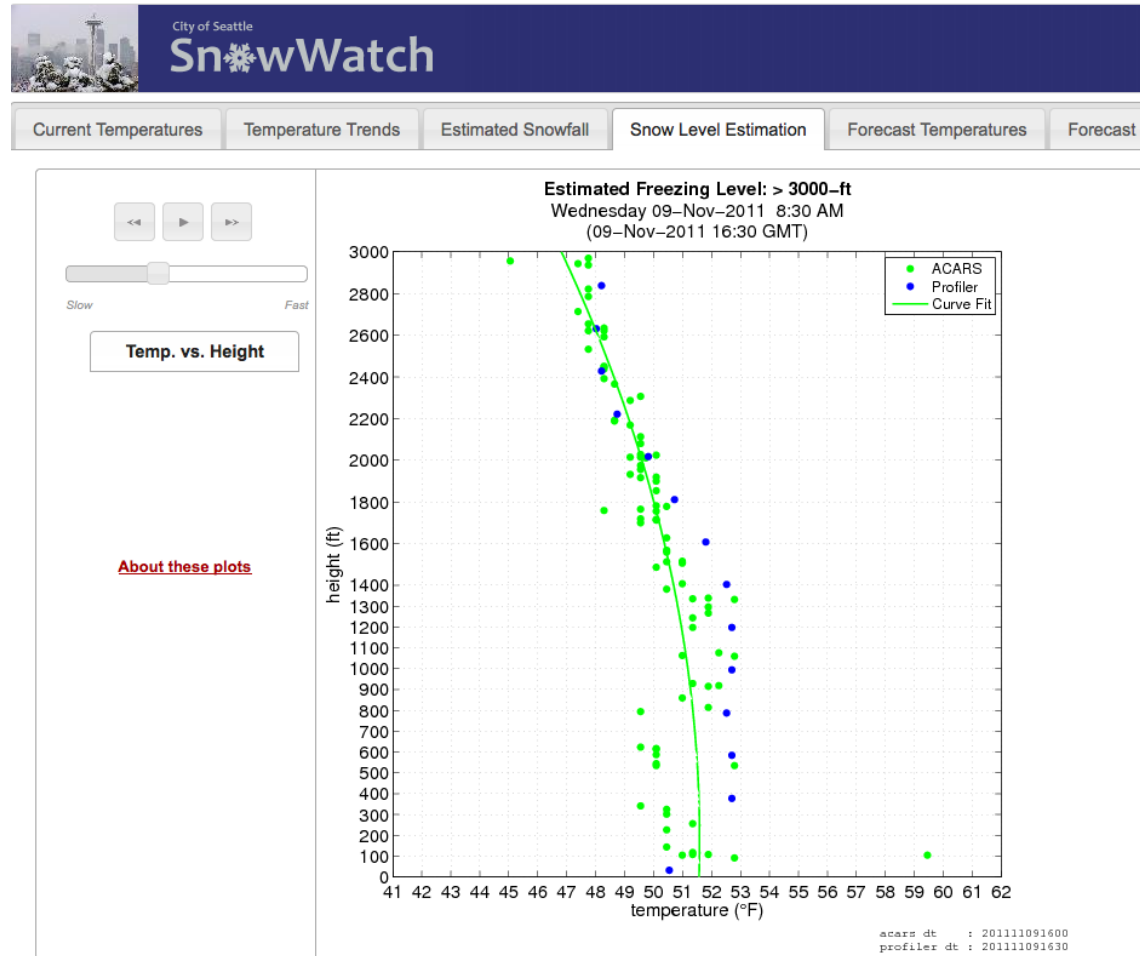
Station:

N. Seattle WSDOT T130T station near I-5 & NE 130 St
(47.726 -122.324, 354 ft elevation)

Shows current 2-m air temperatures and roadway temperatures, as well as temperature change



And much more, such as determining the freezing level using vertical sounders and aircraft ascents/descents



Seattle has had far better response to ice and snow after SnowWatch

[Local News](#) | [Local Politics](#)

Seattle Mayor Mike McGinn takes his snow test seriously

Originally published January 18, 2012 at 8:46 pm | Updated January 19, 2012 at 8:49 am



Seattle Mayor Mike McGinn talks to a reporter in the city's Emergency Operations Center on Wednesday as the city tried to cope with snow.

UW Forecast

NWS Gridded Forecast

HRRR Forecast

Observations

NWS Warnings

NWS Zone Forecast

NWS Discussion

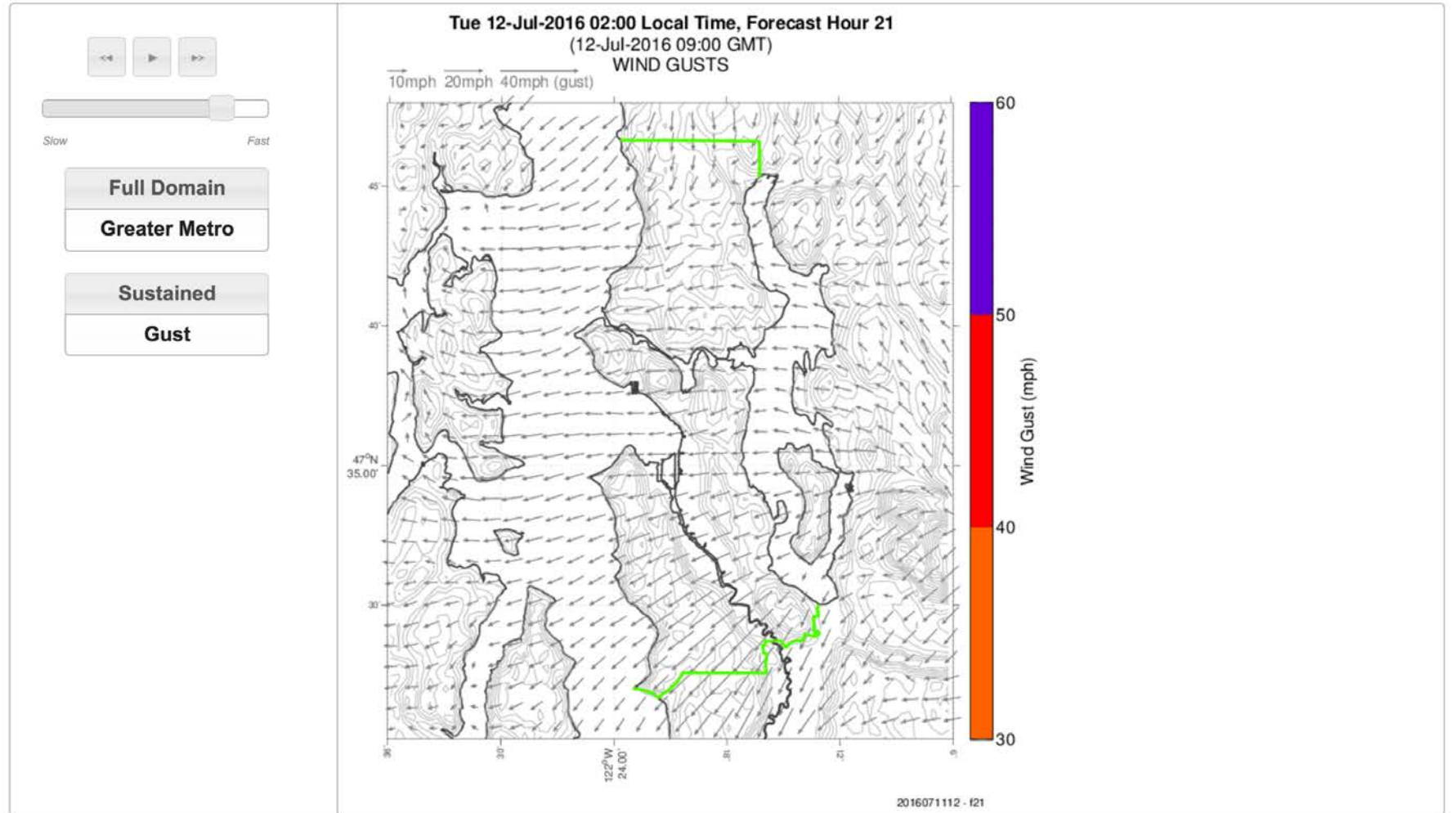
Profiler

Alerts

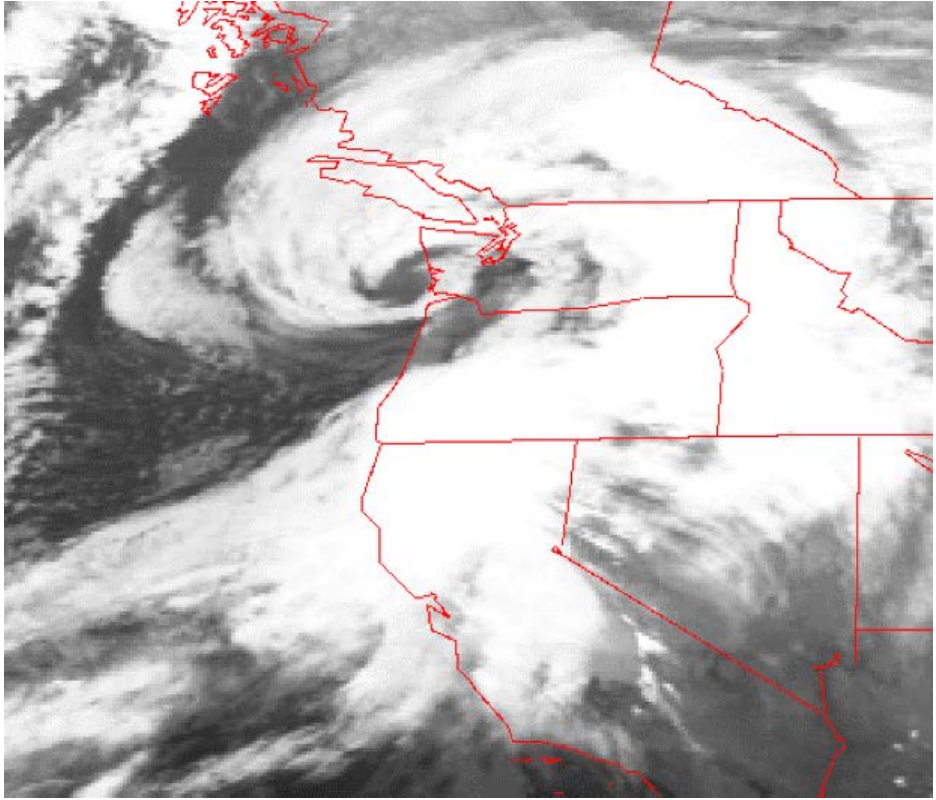
Verification

Rewind

WindWatch



The Pacific Northwest Is Hit By Pacific Cyclones with Winds Equivalent to Category 2 Hurricanes






Why Wind Nowcasting for Utilities?

- Mobilize enough personnel to deal with damage
- Secure resources (e.g., replacement parts)
- Stage equipment and personnel in correct parts of service area.
- Warn public to prepare (e.g., secure batteries, keep away from trees)



Seattle City Light Wanted a Capable Nowcasting System: WindWatch

- Monitors high resolution forecasts:
 - University of Washington WRF forecasts (12-4-1.3 km grid spacing)
 - NOAA/NWS High Resolution Rapid Refresh (HRRR)
- Monitors observed wind speed at all local mesonet stations
- WARNS via email when a threat exists.

From Jeff Baars 

Subject **WINDWATCH : ALERT (hires)**

Windwatch Strong Wind Notice

A Maximum Gust windspeed exceding 30.0 mph is being forecast by the UW WRF Model.


Time of the forecast high wind event: Friday 15-Jul-2016 22:00 PST

Wind Map: http://www.atmos.washington.edu/SCL/plots_hires/WRF_scl2_2016071500_f29_gust.gif

Major Nowcasting Game Changer: HRRR (High Resolution Rapid Refresh)

- Initialized every hour, with 15 hour forecasts
- Uses all available mesoscale information.
- 3-km grid spacing
- Added to WindWatch

U.S. Department of Commerce | National Oceanic & Atmospheric Administration | NOAA Research

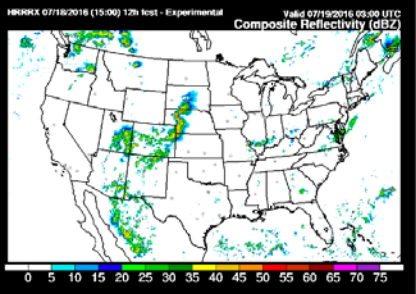
 **Earth System Research Laboratory**
High Resolution Rapid Refresh (HRRR)

Earth Modeling Branch (EMB) Projects GSD Home ESRL Home [EMB Job Opportunities](#)

[HRRR Home Info Page](#)
Current and Forecast Graphics
[NCEP HRRR Now Operational Effective 30 Sept 2014](#)
[NCEP HRRR Hourly](#)
[NCEP HRRR Subhourly](#)
Experimental HRRR:
[HRRR Hourly](#)
[HRRR Subhourly](#)
[HRRR \(alternative\)](#)
[HRRR-TLE-Time-Lagged Ens](#)
[Exp HRRR-Alaska](#)
[Exp HRRRE](#)
[HRRR-Aviation Hourly](#)
[HRRR-Aviation Subhourly](#)
[HRRR Soundings](#)

The High-Resolution Rapid Refresh (HRRR)

The HRRR is a NOAA real-time 3-km resolution, hourly updated, cloud-resolving, convection-allowing atmospheric model, initialized by 3km grids with 3km radar assimilation. Radar data is assimilated in the HRRR every 15 min over a 1-h period adding further detail to that provided by the hourly data assimilation from the 13km radar-enhanced [Rapid Refresh](#).



Composite Reflectivity

HRRR has radically changed nowcasting in the U.S.

SPC - HRRR Model Browser
Day1 Fire
Day1 Conv
Meso Disc
Watches
Reports
SPC HOME

NOAA/NWS Storm Prediction Center
23Z - HRRR3 - F3

Choose Sector

▲
◀
▶
▼

Model Run	18	19	20	21	22	23	00	01	02	03	04	05	06	07	08	09
25/18z																
25/19z																
25/20z																
25/21z																
25/22z																
25/23z																

Latest -->

Parameter Selection

- Composite Reflectivity ?
- MSL Pressure & Wind ?
- Shear Parameters ?
- Thermo Parameters ?
- Proxy Indicators ?
- Max Surface Wind ?
- Energy-Helicity Index ?
- Updraft Helicity ?
- Winter ?

Product Overlays

- Day1 Outlook
- Day1 Fire
- Watches & Warnings

Map Overlays

- Counties
- Cnty Warning Areas
- Highways & Cities
- ARTCC Regions

Image Underlays

- None
- Topography
- Population
- Latest Radar
- Latest Sfc Obs

Parameter Description

This site only depicts a subset of operational HRRR hourly output grids that are useful for the prediction of severe thunderstorms and winter weather.

For general information regarding the HRRR, refer to [The High-Resolution Rapid Refresh \(HRRR\) Information Page](#).

For a more thorough source of operational HRRR output, please go to: [The NCEP Model Analysis and Guidance Page](#).

For HRRR online training, go to the [NWS SOO Science and Training Resource Center](#).

PAGE INSTRUCTIONS

You can browse forecast hours and model runs by using the keyboard "arrow" keys. Left and right will change forecast hour, while up and down will change model run times.

This webpage is NOT supported 24x7. Please use with caution.

For further questions, or to report bugs, please contact [John Hart](#).

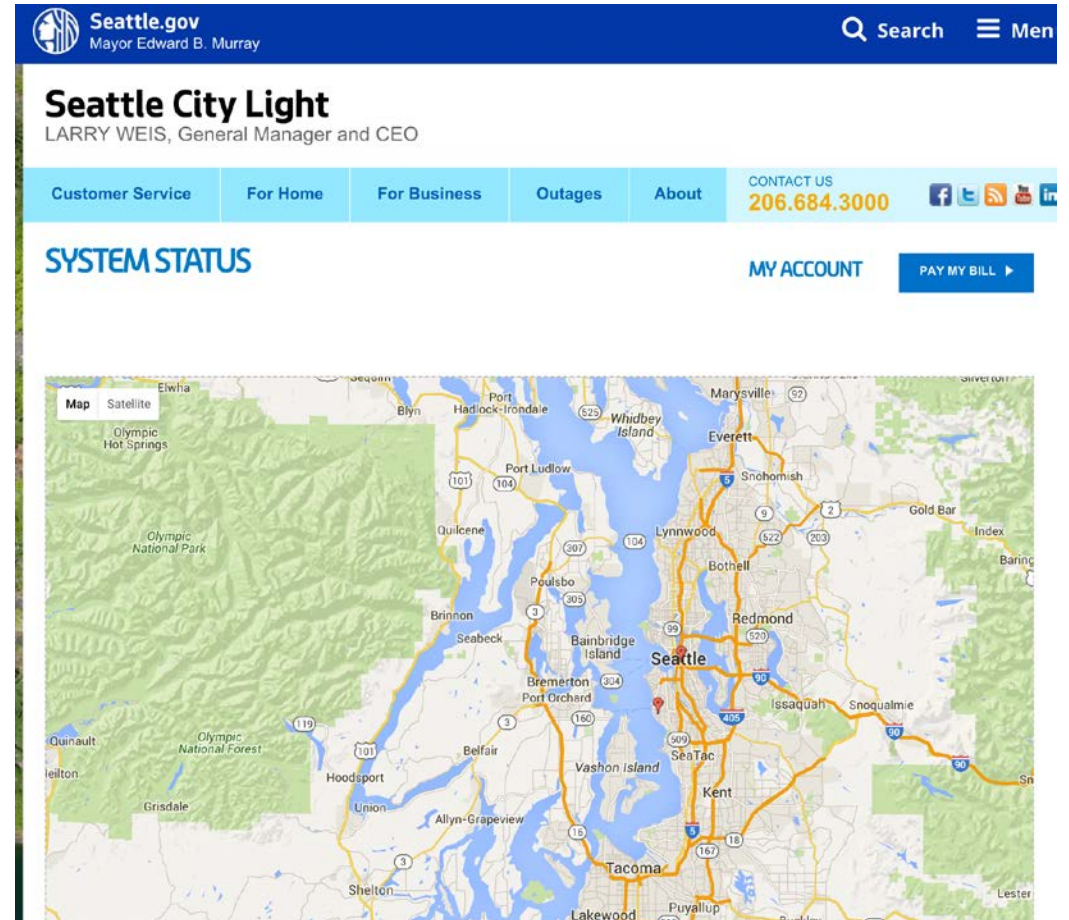
Tue, 26 Jul 2016 02:00 UTC
Northeast US Region

HRRR3
Run: Mon, 25 Jul 2016 23:00 UTC
3 Hour Forecast

Composite Reflectivity
MSL Pressure & Wind
[Overlay] Highways & Cities

WindWatch Implications

- Has greatly enhanced Seattle City Light's ability to deal with windstorms
- Power is restored more quickly than neighboring utilities



Nowcasting apps also have relevance to global warming resilience

As the earth warms and the climate becomes more extreme in some locations, state-of-science nowcasting can provide **the last line of defense** for climate-related extreme weather.



The End



NOW CASTING